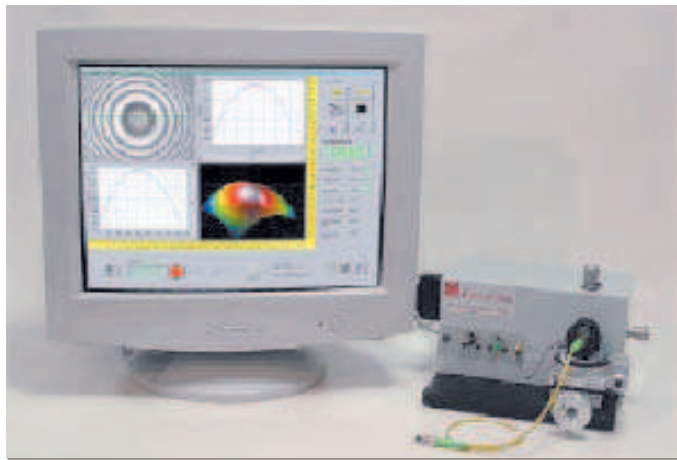


[INTERFEROMETRY INSTRUMENT]

KONCENTRIK 4.0

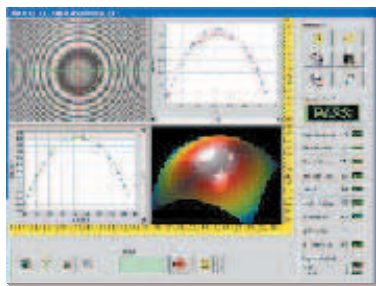


Koncentrik provides high resolution 2D & 3D surface profiles with the end geometry measuring apparatus using interference-fringe.

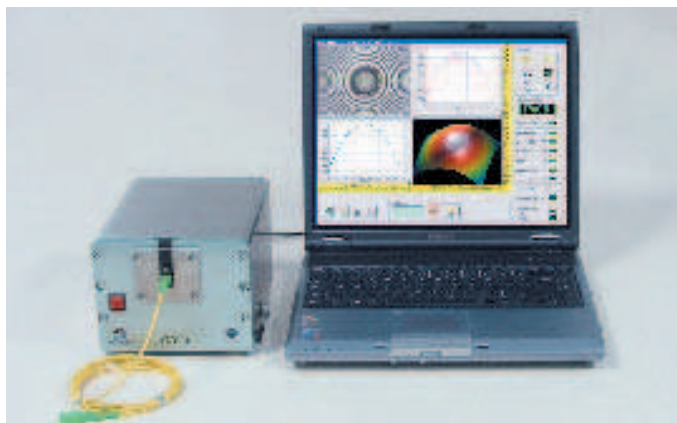
This system can measure the geometry of ferrule end face, ferrule eccentricity and core eccentricity.

Accuracy of Geometry Measurement

Radius	$\pm 0.5\text{mm}$
Fiber Height	$\pm 5\text{nm}$
Apex Offset	$\pm 5\mu\text{m}$



DAISI



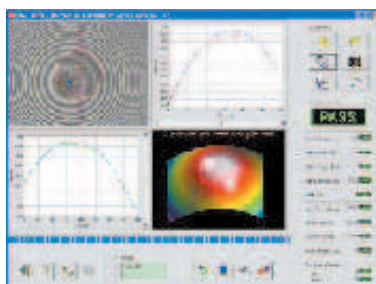
DAISI (Digital Automated Interferometer for Surface Inspection) achieves the high workability and repeatability with the features such as auto-focus function, auto-calibration function or auto connector fixing system. Measuring single ferrule fiber connectors also can be conducted as well as MT-RJ connector.

The use of a USB2.0 interface enables to use this system on lap-top PC.

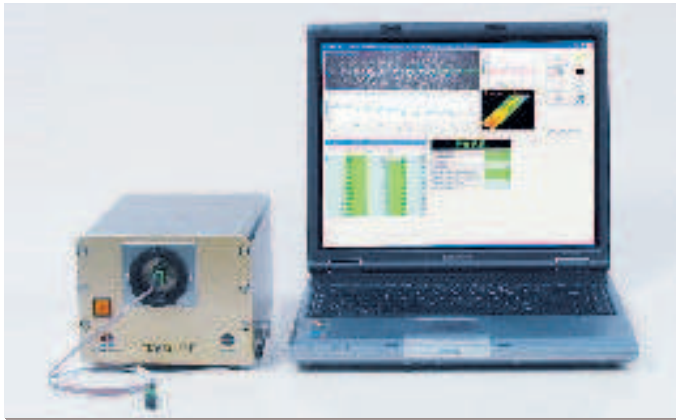
Accuracy of Geometry Measurement

Radius	$\pm 0.2\%$
Fiber Height	$\pm 1.5\text{nm}$
Apex Offset	$\pm 1\mu\text{m}$

※One sigma values



DAISI-MT



DAISI-MT (Digital Automated Interferometer for Surface Inspection of MT) has same technologies as DAISI while adding high resolution CCD camera to achieve excellent accuracy and repeatability for MT geometry measurement.

Accuracy of Geometry Measurement

Flatness	$\pm 0.5\%$
Polishing Angle Error	$\pm 0.01^\circ$
Fiber Protrusion/Undercut	$\pm 0.01 \mu\text{m}$

※One sigma values

